

TARAKESWAR DEGREE COLLEGE

Govt. Aided

Affiliated to the University of Burdwan
Recognised under Section 2F & 12B of the UGC

Estd.- 1986

College Accredited by NAAC with 'B' Grade (2nd Cycle) 2015



Prospectus

SESSION : 2021-22

For B.A./ B.Com/ B.Sc/ B.B.A.(H)

General & Honours Courses

Our Mission

From Quality Awareness
To Quality Assurance
To Quality Sustenance

Our Vision

Dissemination of learning among all members of the society
across narrow barriers of Caste, Creed and Religion and
also among the economically challenged.

Prospectus-2021-22

Retrospect

Tarakeswar Degree College is a relatively new college as compared to other colleges in the neighbourhoods. It was established thirty four years ago on 5th September- a day celebrated as the Teachers' Day in memory of Dr. Sarbapally Radhakrishnan, a renowned Indian philosopher and educationist. Our Silver Jubilee Year's Celebration was observed through various academic activities and cultural programmes.

Tarakeswar is situated in the rural hinterland of Hooghly district in West Bengal. It is about 60 Kms. away from the city of Kolkata. It is a well known place of pilgrimage for the devotees of Lord Shiva. The place Tarakeswar owes its name to Lord Taraknath its presiding deity. The extension of the railway track from Sheoraphully to Tarakeswar in the year 1884 facilitated the influx of pilgrims to this place and thereby heightened the popularity of Tarakeswar. It is well-connected by both bus and train with various places of West Bengal.

The Hooghly district, pre-dominantly has an agro-based economy. The students coming to this college hail from families with agricultural background. There are even first generation learners and it is a challenge to impart knowledge to them.

However, the apparent drawbacks did not deter the visionary forefathers of this Institution from laying its foundation. They worked relentlessly to transform their dream into reality, to enlighten and ignite the minds of a large section of uneducated off-springs of peasant families. The tireless efforts of a group of people who were concerned about the deplorable lack of higher education facilities in and around Tarakeswar as made it possible to form a preparatory committee with the following members :-

(1) Sri Sabyasachi Sen, D.M., Hooghly (President) (2) Sri Kenaram Bhowmik, Secretary (3) Sri Srimat Dandi Swami Hrishikesh Ashram Mohanta Maharaj, Tarakeswar Math (4) Sri Anil Basu, M.P. (5) Late Narandranath Mukherjee (6) Late Kashinath Ghosh, (7) Late Nityagopal Pal (8) Late Sadan Chandra Ghosh (9) Late Ramsingh Pal (10) Sri Tushar Kanti Pal (11) Sri Partha Banerjee (12) Late Krishna Ch. Samanta (13) Late Arjun Krishna Bera (14) Late Bimalendu Mazumder (15) Sri Ajit Kumar Ghosh (16) Sri Swapan Kumar Samnata (17) Sri Tarak Prasad Banerjee (18) Late Jagannath Kheto (19) Sri Kartick Ch. Majhi (20) Late Krishna Mohan Das (21) Sri Biren Dutta (22) Smt. Mira Roy (23) Sri Dipak Banerjee.

His Holiness Sri Srimat Dandiswami Hrishikesh Ashram Mahanta Maharaj of Tarakeswar Math with his kindness and generosity donated 3.5 acres of prime land for the purpose of establishing the college campus.

Kind support from the Hon'ble Member of Parliament, Sri Anil Basu and Hon'ble Minister of Fire & Emergency Services Department, Govt. of West Bengal, Sri Pratim Chatterjee, Sri Shankar Ray Chowdhury, Ex-General of Army & Member of Rajya Sabha, who made liberal contributions from their Local Area Development Funds became instrumental in shaping the college. The spontaneous help of the rank and file of Tarakeswar and the surrounding villages, the active co-operation of Tarakeswar Municipality and new mass-oriented higher education policy of West Bengal Government combined to bring this centre of learning into existence.

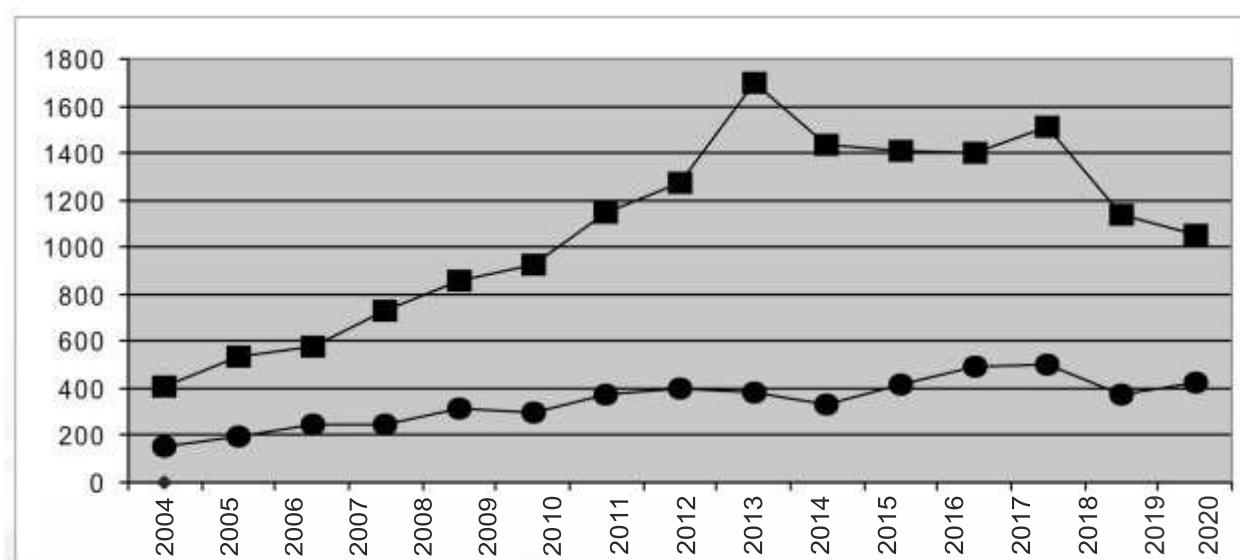
The college never boasts of being a centre of excellence but it has definitely served as a nodal college in this region. In recognition of the above and of its potential to excel as a centre of learning the college was recognised under Section 2F & 12B of the UGC on Jan 24, 1991. Despite several odds, the college has made conspicuous progress in terms of physical expansion, diversification of the subject combinations and number of students getting enrolled.

The college started its journey with six departments (Pass), having only 37 students. Today we have more than 5500 students pursuing both General and Honours curriculum in as many as twenty departments.

The College is Growing

SI No.	Year	Number of Registered student in the 1st year class [General]	Number of Registered student in the 1st year class [Honours]
1	2004	405	157
2	2005	536	193
3	2006	577	249
4	2007	734	245
5	2008	859	310
6	2009	926	299
7	2010	1150	370
8	2011	1275	396
9	2012	1694	382
10	2013	1431	331
11	2014	1409	414
12	2015	1397	493
13	2016	1513	498
14	2017	1140	370
15	2018	1050	422
16	2019	1283	479
17	2020	1170	412

Graph showing the trend of the registered students in the 1st year General & Honours Courses

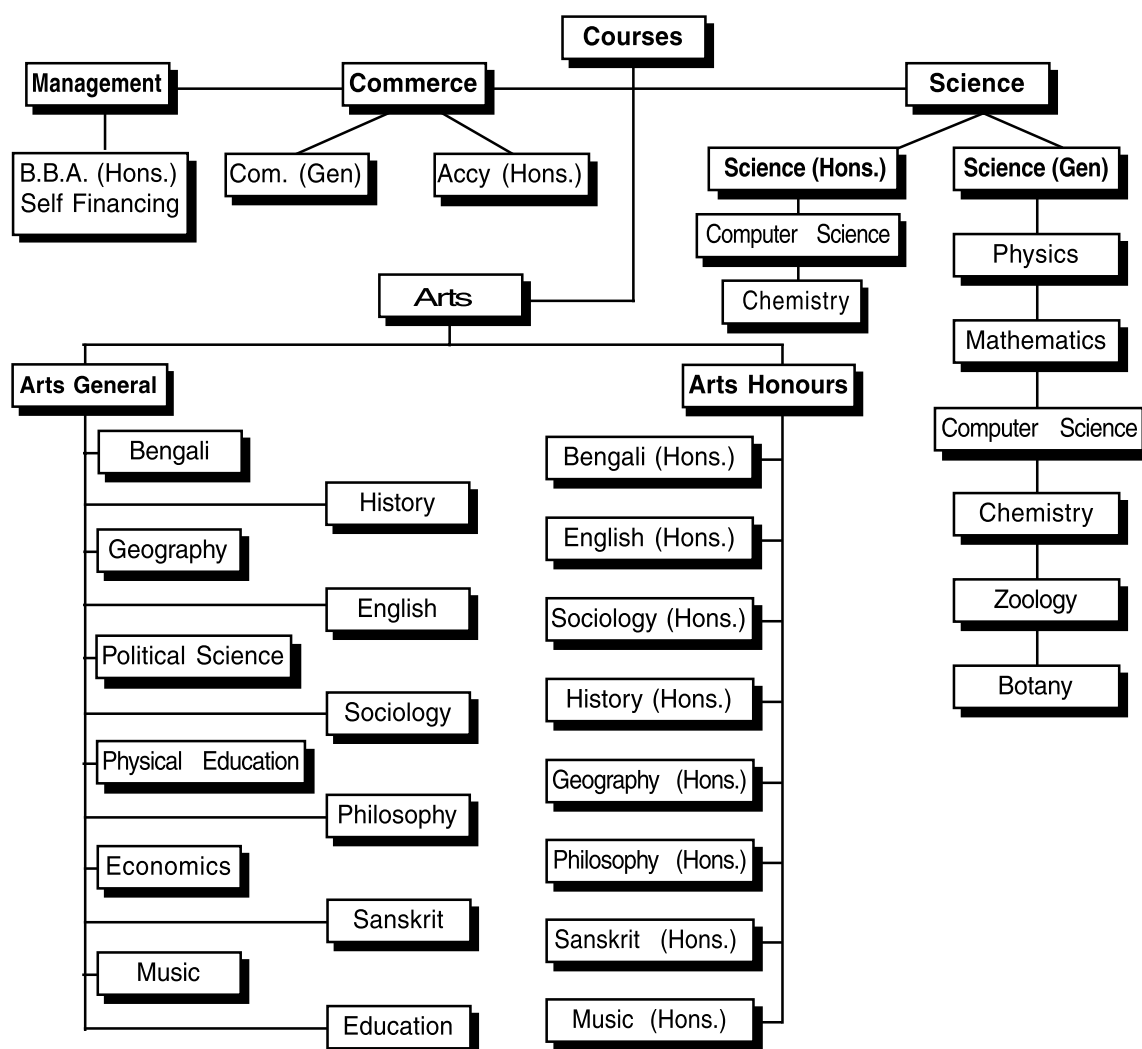


The college is now endowed with learning resources in the form of sufficient number of text and reference books in the library.

The college has a small auditorium, a multi-gym, a large playground and an indoor sports complex is under construction, within its premises, to help the students' strive for all round development. The teaching staff are sincere in their approach to the students. The non-teaching staffs are also attentive to the needs of the students and sympathetic to their problems.

Despite resource paucity we are confident of exploring all available avenues of mobilising resources to improve infrastructural facilities needed for better functioning of the institution in the years to come. We are confident that we will go ahead and smile through all the difficulties that may come in our way.

Looking to Subject Profile : Subjects we offer are diversifying



Certificate Courses :- Functional & Communicative English.

A Certificate course in functional/communicative English is offered to students.

ADMISSION PROCEDURE

Candidates are directed to apply on-line through college website (www.tarakeswardegreecollege.org) for admission to the B. A. , B. Sc, B. Com (Hons. & General) Courses.

Note : Admission to B. A. , B. Sc, B. Com (Hons. & General) courses is strictly on merit basis. So don't come forward for admission without following merit list.

1. (i) Generic Electives will be chosen stream-wise i.e. B.A./B.Com/B.Sc. by a student of Honours/General Course
- (ii) In case of B.A./B.Sc. Honours Course, a student shall have to choose 4 Generic Electives strictly from 2 subjects/disciplines of choice taking, exactly 2 courses from each subject/discipline. Such a student shall have to study the curriculum of Generic Elective of a subject/discipline specified for the relevant semester. For example, suppose there are 5 Science subjects viz. Physics, Chemistry, Mathematics, Botany and Zoology available in a college. A student of Physics Honours shall have to choose strictly 2 subjects/disciplines from among Chemistry, Mathematics, Botany and Zoology. If the student chooses Chemistry and Mathematics as Generic Electives then he/she will have to study exactly 2 courses from Chemistry and 2 courses from Mathematics. If he/she opts for Chemistry as a Generic Elective in the 1st Semester, Mathematics in the 2nd Semester, Mathematics in the 3rd Semester and Chemistry in the 4th Semester then he/she will study the curriculum of GE-1 of Chemistry in the 1st Semester, the curriculum of GE-2 instead of GE-1 of Mathematics in the 2nd Semester, the curriculum of GE-3 of Mathematics in the 3rd Semester and the curriculum of GE-4 instead of GE-2/GE-3 of Chemistry in the 4th Semester. Similarly for B.A. Honours also. (iii) In case of B.A. General Course, a student shall have to choose 2 Generic Electives strictly from a particular subject/discipline which will be different from the core disciplines including the core languages. Such a student shall have to study the curriculum of GE-1 of that subject/discipline strictly in the 5th Semester and the curriculum of GE-2 of that subject/discipline strictly in the 6th Semester. For example, suppose there are 5 Arts subjects viz. Bengali, English, Sanskrit, History and Political Science available in a college. If a student chooses Bengali as core discipline-1, History as core, discipline-2 and English language and Bengali as core languages then he/she will have to choose Sanskrit/Political Science as Generic Elective and in this case, he/she will have to study the curriculum of GE-1 of Sanskrit/Political Science in the 5th Semester and the curriculum of GE-2 of Sanskrit/Political Science in the 6th Semester.
2. In view of the order of the Hon'ble Supreme Court, Credit and Full Marks of ENVS (AECC-1) will be 4 and 100 respectively instead of 2 and 50.

**On Line Admission to the Hons. Subjects
through Merit List based on the following eligibilities' criteria**

	Course	Subject	Minimum Aggregate	Minimum Marks in the concerned subject	Seats
1.	B.A. (Hons)	Bengali	45 %	55 %	81
2.	„	English	45 %	55 %	81
3.	„	History	45 %	55 %	81
4.	„	Geography	45 %	55 %	37
5.	„	Sociology	45 %	–	81
6.	„	Philosophy	45 %	55 %	56
7.	„	Sanskrit	45 %	55 %	32
8.	„	Music	40 %	–	33
9.	B.Com (Hons.)	Accountancy	45 %	50 %	81
10	B.Sc. (Hons.)	Chemistry	45%	55%	10
11	B.Sc. (Hons.)	Computer Science	45% in H.S. Science & Mathematics 50%		32
12.	Management	B.B.A. (Hons) Both Online & Offline Admission	H.S. pass in any stream		33

1. Admission to Arts General Courses (Intake–1310)

Note : No re-admission is possible for back/failed candidates students. However they have an opportunity to get admission to Honours course of **Netaji Subhas Open University (C-10)**, a study centre in our college.

2. Admission to B.Sc. General Courses :

- 1) Botany - 25 Seat., 2) Zoology - 25 Seat. 3) Physics 20 Seat., 4) Mathematics 20 Seat.
- 5) Chemistry-20 Seat., 6) Comp Sc.20 Seat.

ELIGIBILITY CRITERIA :

- No Student is eligible for admission to such programmes unless he/she passes H.S Examination (10+2)
- Students from Board other than WBCHSE can also apply.
- Within the guidelines provided by the University of Burdwan, the College determines admission criteria of various Honours and General Courses.
- Eligibility criteria are put up on the college website.
- Student are admitted if they fulfill admission criteria.

REQUIRED DOCUMENTS :

1. Xerox copies of online system generated Application Form.
2. Xerox copies of Madhyamik Admit Card, Mark Sheets of H.S. Examination (10+2)
3. SC/ST/OBC & PWD Candidate must attach Xerox copy of certificate with the application form.
4. All original documents will have to produce at the time of admission verification.
5. Original Migration certificate from the University/Board is to be produced at the time of filling up Burdwan University Registration Form in case of migrating candidates.
6. For the transfer case, the candidates must produce original Transfer Certificate from the institution last attended.
7. Original School/College leaving certificate from the Head of the Institution last attended is to be produced at the time of admission verification.
8. One copy of Anti-Ragging Affidavit form authenticated by Notary Public Officer.

■ CANCELLATION OF ADMISSION

If any student remains absent from his/her classes continuously for thirty days within the first two months from the date of his/her admission, his/her name will automatically be struck off the rolls, Fees submitted by the students at the time of admission shall also be forfeited.

■ RULES REGARDING REGULAR STUDENTS

The student once enrolled i.e. filled up forms for 1st Semester will have regularity for 3 years as regular students, but he/she complete graduation within 5 years from the date of enrolment in the 1st Year.

STUDENT'S SUPPORT SYSTEM

The college firmly believes that a worthy institution is expected not only to impart education to the students but also to provide them with valuable support for their progression from the college to further education or to the world of job market. The institute also believes that during their studentship in the college adequate scope should be provided for health-aids, entertainment, refreshment, complaint redressal etc. As mentioned earlier, our means are limited and therefore although we believe in students' support extending the same does not seem to be possible always, Yet with the sincere attempt in course of time the college will be able to develop the same.

■ LIBRARY FACILITIES

The College has a rich and useful Library consisting of more than 20,000 text and reference books of various disciplines presently housed in the library building. It has a Reference section, a lending section and a separate Reading Room. The Library has now the following facilities :

(a) Open Access for Books, (b) Open Access for Journals, (c) Open Public Access Catalogue, (d) Display of current journals.

On payment of the library deposit each student is provided with two cards, one Reference card and the other Lending/Borrower's card. The cards are strictly NON TRANSFERABLE. Reference card is meant for the issue of a book to be read, only on the day, in the Reading Room. Books will be issued against Lending/Borrower's card for home use.

■ LIBRARY HOURS

Lending Section [Sunday Closed]	10.30 AM -1.30 PM
Reading Room [Sunday Closed]	2.30 PM -3.30 PM

■ LIBRARY RULES

- Students can borrow two books at a time, which must be returned within 15 days from the date of issue. Books may be re-issued, meanwhile if there is no demand for them.

- Any student keeping a book beyond the time allowed will be fined as decided by the Principal and even debarred from using the library for one week or more depending on the situation
- Any book lost, damaged or defaced must be replaced by the borrower. If the book be one of a series and cannot be available single, the whole set must be replaced. If the book is lost, and is out of print, the borrower must pay a fine to be decided by the Principal, in addition to the published price. Till the damage or loss is made good the borrower will have no right to use the library.
- Honours students are allowed to borrow books only for Puja Vacation, which should be returned within one week after the re-opening of the College, thereafter fine will be charged as per rules, including the vacation period. This fine will not be excused on any ground whatsoever.
- Students will be issued books only once in a day on Borrower's Card. Return of the same will not be allowed after the lapse of a full day.
- There will be no issue of books for home on Saturday, but books on Reference Card will be available for use in the Reading Room.
- Old students who have graduated from the College and are studying in Post-graduate classes may, on the recommendation of the Librarian and permission of the Principal, avail the Reading Room facility but will not be allowed to borrow books under any circumstances.
- Library cards are to be kept with utmost care, loss of which must be reported immediately to the Librarian and a duplicate card will be issued on payment of fine. Cards must be surrendered and clearance certificates have to be obtained before filling up the forms for B.A./B.Com Final Examinations.
- Students seeking Transfer Certificate and also the refund of Library deposit must produce a clearance certificate from the Librarian for the purpose, to the college office.
- Late fee to return Library book beyond one month @ Re. .20 paise per day for each student.

■ GAMES & SPORTS FACILITIES

The College has a playground of its own within the college premises. It also offers facilities of physical exercise to its students through games like Football, Volleyball, Cricket, Kabadi and encourages athletics in the form of Annual Sports Meet. The College is affiliated to the Burdwan University Sports Board, and participates in inter-college competitions. Our Volleyball team (both boys & girls) are champions in the University.

■ UNIFORM FOR PHYSICAL EDUCATION STUDENTS :

All the students who have Physical Education as combination subject must have to arrange appropriate activity dress prior to practical classes at their own responsibility.

Jersey & Pant : Mono colour (Sky Blue) : Tracksuit (upper & lower) : Mono colour (Navy Blue)

■ GYMNASIUM / YOGA

The College has Gymnasium/ Yoga centre in the college premises. Separate training for boys and girls students are arranged.

■ COLLEGE MAGAZINE

The magazine, Charbak published once a year, is edited by Students, under the guidance of an Editorial Board, comprising faculty members.

Every student is entitled to have a copy of the magazine and can contribute poems, short stories and articles to it, but their publication depends exclusively on the selection of the editorial board.

■ WALL-MAGAZINE

A Wall-Magazine, Lahori, is published by the students in which articles of general interest are published by a Student Editor, under the guidance of a Professor-in-charge. Students of various departments contribute to this Wall Magazine.

■ DEPARTMENTAL WALL MAGAZINE

Some departments publish wall magazine at a regular interval.

■ COMMON ROOM

There are two separate Common Rooms for boys and girls. A number of Journals and Newspapers are subscribed for the students which are available in the Common Room on production of Common Room Card. Provision for indoor games, viz Table Tennis, Carom and Chess are also there.

■ NATIONAL CADET CORPS (NCC)

N.C.C. training is imparted to the girls & boys students of the College. Parades are held in the College Ground on Wednesday under 3rd Bengal Battalion, Serampore, Hooghly, of West Bengal and Sikim Directorate. Various camp such as ATC, CATC, NTC, AATC are organized throughout of the year. Enrolment is made just after the beginning of the 1st year classes. N.C.C. Cadets are eligible for 'B' and 'C' certificate examination every year conducted by the Directorate at the end of January. NCC Students are required to provide his/her own bank account number at the time of enrollment to 1st year NCC for getting TA/ WA directly.

■ NATIONAL SERVICE SCHEME (NSS)

The four N.S.S. Units of the College approved by the Burdwan University had started functioning since January 1990. College students, both male and female, may join the scheme as one of the Co-curricular Programmes under the guidance of a Programme officer who is a member of the teaching staff, its regular activities include adoption of a village, road repairing, cleaning the college premises, mass literacy campaign and various other social service campaigns.

■ COLLEGE CANTEEN

The College has a good canteen which caters to the need of the students specially those who come from distant rural areas. Good foods prepared under hygienic conditions, are served at reasonable prices.

■ MEDICAL AID & REGIONAL STUDENTS' HEALTH HOME

Students can avail consultations with the specialists in 'Student Health Home' to which the College has an institutional membership. The College has started a Health Care Unit in the campus organized by the Alumni with the sincere cooperation of local doctors. Health insurance facilities are provided to each and every student by the college authority.

■ STUDENTS' AID FUND

Poor and meritorious students are given aid in the form of concession in tuition fees only.

Students from the economically weaker sections of the society (Scheduled Castes / Tribes/OBC/Physically Handicapped / Minorities) get Govt. of India's stipend through West Bengal Govt, to meet fees and other charges.

Meritorious students are taken special care of by the State Govt. and the girl students get various stipend from government.

■ STUDENTS' UNION

The College has a democratically elected students' union. Its election is held as per the Constitution approved by the Governing Body of the College. Teachers and administration of the College constantly interact with the students' union To review and redesign teaching programmes to introduce new courses, and To ensure discipline in the college campus. The constructive relation between the administration and the students' union is a noble heritage of the college. On its own, the students' union organizes various cultural programmes, sports competition etc. It also publishes the annual college magazine.

■ VEHICLE PARKING SHED

The college has a cycle stand within its premises where students and visitors must keep their bi-cycles, motorcycles etc.

■ NOTICE BOARD

The Central Notice Board is located on the ground floor of the college and a Digital Notice Board is displayed in front of the college. Besides, each department has its own notice board which displays relevant information relating to examination schedules, results of class tests, seminars/workshops, extension lectures, change in schedules or in allotment of classrooms, class-routine, wall-magazines, suspension and resumption of classes, departmental academic calendar etc. Therefore, students should keep themselves abreast of such information and look at the notice-board regularly.

■ REMEDIAL COACHING

UGC Sponsored Remedial classes are arranged for the students belonging to socially and economically weaker sections of the society (Scheduled Castes / Tribes/OBC/Physically Handicapped / Minorities).

■ VALUE PRACTICE

- Always maintain high standards of academic & administrative discipline.
- Always help to keep the classroom & environment clean.
- Always follow the rules of the institution.
- Always promote fellow feeling, objectives, interest & image of the Institution.

■ DISCIPLINE

The College is fully aware of the need for maintaining the highest standard of discipline among the students, without which the very purpose of liberal education is defeated. Teacher-student contact in this college being the closest possible, teachers here constantly inspire students to become good citizens, perfect in manners and behaviour. Students also reciprocate, and try to maintain discipline in and outside the College. Every student individually and/or collectively shall be responsible for any loss/damage to the property of the college.

■ ALLUMNI ASSOCIATION

College has a registered Alumni Association. Generally after passing the Final Examination students are registered and alumni directory is regularly published.

■ PARENT-TEACHERS MEETING

Generally meeting of the Parent-teachers are held departmentwise for the benefit of the students and suggestion are taken for the development of the institution.

■ BIO-DIVERSITY /SCIENCE CLUB

The College has a Biodiversity Research Centre under which One project is running : Preparation of People's Biodiversity Register (PBR) of Tarakeswar Municipality of Tarakeswar Block of Hooghly District , Sanctioned by West Bengal Biodiversity Board, Department of Environment, Government of West Bengal. The Biodiversity Lab of the college is utilized by the research scholar and student of neighbouring college.

■ WOMEN CELL

The college has also a separate women's cell to organize debate on the issues regarding women's rights, women's empowerment, gender equality etc. invite of women's rights activists and organizes awareness campaigns on issues of gender violence and to identify the problems and needs of the female students of the College in order to redress them as far as practicable.

■ HUMAN RIGHT CELL

The college has a Human Right Cell comprising representative of various stakeholders of the college. The cell organizes awareness programme for the students time to time regarding human rights.

■ ANTI-RAGGING CELL

In accordance with the guidelines of the UGC & the Government of West Bengal, the college has constituted an Anti-Ragging cell comprising teaching and non-teaching staff as well as students of the college.

■ BOOK BANK

The students' union of the college runs a Book Bank for poor and meritorious students.

■ GRIEVANCE REDRESSAL CELL

The College has grievance cell to redress the grievances of the students. The students can drop their complains in the specified box located in the first floor of the College, just beside the College office. However, the student must identify himself/herself in that complains letter by way of mentioning his/her class, and roll number.

■ CAREER COUNSELLING CELL / ICT CLUB

The College has Career Counsellor Cell which organizes various programme for giving guidance to the student for placement in various jobs after completion of their degree. The cell also introduces on-line Entry-to-Service Exam, and also provide news of jobs in the college website.

■ NETA JI SUBHAS OPEN UNIVERSITY STUDY CENTRE C-10 (Ph-03212-279628)

With a view to provide education through distant learning mode, the college started a study center of NSOU in its campus from July, 2002 . The centre offers the following programmes:-

(A) **B.A. (HONS)**. - Beng, Eng. Hist, Pol.Sc. , Pub. Adm. Eco., Geo., Math. (B) **B.COM (HONS)** - Accy. (C) **P.G. DEGREE** - Beng, Eng., Pol.Sc, Hist., Math., Education (D) **P.G. DIPLOMA** - Journalism & Mass Communication (E) **CERTIFICATE COURSE & BPP** - Human Rights

■ POST GRADUATE COURSES (CORRESPONDENCE)

Correspondence PG Courses has to be provide in our College and it is conducted by Personal Contact Programme (PCP) from 2018 the subjects are :

- ◆ MA in Bengali.
- ◆ MA in English.
- ◆ MA in History.
- ◆ MA in Philosophy.
- ◆ MA in Sanskrit.

CBCS											
HONOURS					GENERAL						
CORE COURSE	ELECTIVE COURSE		ABILITY ENHANCEMENT COURSE		CORE COURSE	ELECTIVE COURSE		ABILITY ENHANCEMENT COURSE			
CORE	DSE	GE	AECC (ENVS ENG HINDI/ MIL)	SEC	CORE	DSE	GE	AECC (ENVS ENG HINDI/ MIL)	SEC		
14 (ThPr/ThTu) X (4+2/ 5+1) = 84	4 (ThPr/ThTu) X (4+2/ +1) = 24	4 (ThPr/ThTu) X (4+2/ 5+1) = 24	2 X 2 = 4	2 X 2 = 4	12 (ThPr/ThTu) X (4+2/ 5+1) = 72	6/4 (ThPr/ThTu) X (4+2/ 5+1) = 36(BSc)/ 24(BA)	0/2 (ThPr/ThTu) X (4+2/ 5+1) = 0(BSc)/ 12(BA)	2/2 X 2 = 4	4/4 X 2 = 8		
140					120						
SEM-1 20 Credits	SEM-2 20 Credits	SEM-3 26 Credits	SEM-4 26 Credits	SEM-5 24 Credits	SEM-6 24 Credits	SEM-1 20 Credits	SEM-2 20 Credits	SEM-3 20 Credits	SEM-4 20 Credits	SEM-5 20 Credits	SEM-6 20 Credits
CC 1 CC2	CC 3 CC4	CC 5 CC 6 CC 7	CC 8 CC 9, CC 10	CC 11 CC12	CC 13 CC14	(BSc) CC 1 for Sub 1,2,3	(BSc) CC 2 for Sub 1,2,3	(BSc) CC 3 for Sub 1,2,3	(BSc) CC 4 for Sub 1,2,3	(BSc) DSE 1 for Sub 1,2,3 (3x6) = 18	(BSc) DSE 2 for Sub 1,2,3 (3x6) = 18
(2x6) = 12 GE 1	(2x6) = 12 GE 2	(3x6) = 18 GE 3	(3x6) = 18 GE 4	(2x6) = 12 DSE 1 DSE 2	(2x6) = 12 DSE 3 DSE 4	(3x6) = 18 (BA) CC 1 for Sub 1, 2 & Eng. L1/1 (3x6) = 18	(3x6) = 18 (BA) CC 2 for Sub 1, 2 & Beng. L2/1 (3x6) = 18	(3x6) = 18 (BA) CC 3 for Sub 1, 2 & Eng. L1/2 (3x6) = 18	(3x6) = 18 (BA) CC 4 for Sub 1, 2 & Beng. L2/2 (3x6) = 18	(BA) DSE 1 for Sub 1, 2 (2x6) = 12	(BA) DSE 2 for Sub 1, 2 (2x6) = 12
(1x6) = 6 AECC 1	(1x6) = 6 AECC 1	(1x6) = 6 SEC 1	(1x6) = 6 SEC 1	(2x6) = 12 DSE 1 DSE 2	(2x6) = 12 DSE 3 DSE 4	(3x6) = 18 (BA) CC 1 for Sub 1, 2 & Eng. L1/1 (3x6) = 18	(3x6) = 18 (BA) CC 2 for Sub 1, 2 & Eng. L2/1 (3x6) = 18	(3x6) = 18 (BA) CC 3 for Sub 1, 2 & Eng. L1/2 (3x6) = 18	(3x6) = 18 (BA) CC 4 for Sub 1, 2 & Eng. L2/2 (3x6) = 18	(BA) DSE 1 for Sub 1, 2 (2x6) = 12	(BA) DSE 2 for Sub 1, 2 (2x6) = 12
(1x2) = 2	(1x2) = 2	(1x2) = 2	(1x2) = 2	(1x2) = 2	(1x2) = 2	(3x6) = 18 (BA) CC 1 for Sub 1, 2 & Eng. L1/1 (3x6) = 18	(3x6) = 18 (BA) CC 2 for Sub 1, 2 & Eng. L2/1 (3x6) = 18	(3x6) = 18 (BA) CC 3 for Sub 1, 2 & Eng. L1/2 (3x6) = 18	(3x6) = 18 (BA) CC 4 for Sub 1, 2 & Eng. L2/2 (3x6) = 18	(BA) DSE 1 for Sub 1, 2 (2x6) = 12	(BA) DSE 2 for Sub 1, 2 (2x6) = 12
—	—	—	—	—	—	(3x6) = 18 (BA) CC 1 for Sub 1, 2 & Eng. L1/1 (3x6) = 18	(3x6) = 18 (BA) CC 2 for Sub 1, 2 & Eng. L2/1 (3x6) = 18	(3x6) = 18 (BA) CC 3 for Sub 1, 2 & Eng. L1/2 (3x6) = 18	(3x6) = 18 (BA) CC 4 for Sub 1, 2 & Eng. L2/2 (3x6) = 18	(BA) DSE 1 for Sub 1, 2 (2x6) = 12	(BA) DSE 2 for Sub 1, 2 (2x6) = 12
BA/BSC HONORS COURSE : (CC 14x75=1050) + (DSE 4x75=300) + (GE 4x75=300) + (AECC 1x50=50) + (SEC 2x50=100 = 1800 + ENVS) (AECC 1x100 =100) = 1900.					BA GENERAL COURSE : (CC 12x75=900) + (DSE 4x75=300) + (GE 2x75=150) + (AECC 1x50=50) + (SEC 4x50=200 = 1600 + ENVS) + ENVS –AECC-1x100 = 1700 BSC GENERAL COURSE : (CC 12x75=900) + (DSE 6x75=450) (AECC 1x50=50) + (SEC 4x50=200 = 1600 + ENVS) + ENVS –AECC-1x100 = 1700						

17-18
1st & 2nd
July-Jan

18-19
3rd & 4th
July-Jan

19-20
5th-6th
July-Jan

General Rules	Result (% Grade, Letter Grade)	Evaluation	Weightage
• 1 Credit = 1 hour Class/Tutorial per week	90-100% / 10 / O (Outstanding)	Course Without Practical	80% of 75 = 60
• 1 Practical Class = 2 hours per week	80-90% / 9 / A+ (Excellent)	A. Semester end exams	20
• Practical & Tutorial are mutually exclusive	70-80% / 8 / A (Very Good)	10 out of 15 Questions x2 =	
• 6 Credit Paper = 75 marks	60-70% / 7 / B+ (Good)	4 out of 6 Questions x5 =	20
• 2 Credit Paper = 50 marks	50-60% / 6 / B (Above Average)	2 out of 4 Questions x 10=	20
• Dissertation/Project (SEM 6)= DSE only	40-50% / 5 / C (Average)	B. Internal Assessment	20% of 75 = 15
• Chance not availed = Chance Lost	35-40% / 4 / P (Passed)	Attendance (Theory & Tutorial)	5
• To clear all Semesters within 5 years from year of Enrollment	Below 35% 0 / F (Failed)	Class Test/ Seminar/ Assignment (Theoretical & Tutorial)	5+5= 10
• Maximum 3 chances to clear one Semester		Course With Practical	
• May appear at next Semester with backlog	CGPA (Hons & General)	A) Internal Assessment	20% of 75 = 15
• Reappearing: Once only in 50% of Theory Papers	7.50 & above: 1 st Division, Distinction	Attendance	5
• No Reappearing/ PPR for Internal/ Viva/ Class Test/ Seminar/ Project/ Field Report/ Survey	6.50- 7.50: 1 st Division	Class Test/Assignment/ Seminar (Theory & Practical)	5 + 5 =10
• Review: In case of increase, up to 8% - Full Credit; above that, half of the rest	5.00- 6.50 (For Hons); 2 nd Division 4.00- 6.50 (For General); 2 nd Division	B) Practical	20
• No review for AECC & SEC	Below 5.00 (Hons)/ 4 (General)= Failed	Lab Notebook	5
• Third examiner in case of increase above 20%		Viva voce	5
• Review: Decrease, full up to 4%, half of the rest	Attendance	Experiment	10
• Passed not to be Failed due to marks reduction on PPR	• Above 50% but below 60 % = 2	C) Semester end exams	40
• Scrutiny & Review of the same course not permitted	• Above 60% but below 75 % = 3	5 out of 8 Questions x2 =	10
• Cancellation: Entire Exams including Practical	• Above 75% but below 90 % = 4	2 out of 4 Questions x5 =	10
• Honours: 26 Courses, 140 credits, 1850 marks	• 90% & above = 5	2 out of 4 Questions x 10=	20
• General: 24 Courses, 120 credits, 1650 marks		SEC	
	Continuous Assessment	• Internal Assessment	
	➤ C1: 2 nd month/ 8 th week: 10%	Class Test/Assignment/ Seminar	20% of 50 =10
	➤ C2: 4 th month/ 16 th week: 10%	• Semester end exams	40
	➤ C3: 5 th month/21 st -23 rd week: 80%	5 out of 8 Questions x2 =	10
		2 out of 4 Questions x5 =	10
		2 out of 4 Questions x 10=	20

Structure of B. Com (Hons.)/General Syllabus under (CBCS)

Hons.

General

Course	Subject	Course Title	Nature	Course	Subject	Course Title	Nature
Semester I				Semester I			
1.1		Environmental Studies	[AECC-1]	1.1		Environmental Studies	[AECC-1]
1.2 CH	Accounting and Finance	Financial Accounting-I	[CC-1]	1.2 CG	Accounting	Financial Accounting-I	[CC-1]
1.3 CH	Accounting and Finance	Business Management	[CC-2]	1.3 CG	Management Business	Management	[CC-2]
1.4 CH		Microeconomics	[GE-1]	1.4		English Language' [LI-1]	
Semester II				Semester II			
2.1		Communicative English/MIL	[AECC-2]	2.1		Communicative English/MIL	[AECC-2]
2.2 CH	Accounting and Finance	Cost Accounting"	[CC-3]	2.2 CG	Economics	Principles of Economics	[GF-1]
2.3 CH	Accounting and Finance	Business Law	[CC-4]	2.3 CG	Law	Business Law	[CC-3]
2.4 CH		Macroeconomics	[GE-2]	2.4	Accounting	Cost Accounting	[CC-4]
Semester III				Semester III			
3.1 CH	Accounting and Finance	Corporate Laws	[CC-5]	3.1 CG	Law	Corporate Laws	[CC-5]
3.2 CH	Accounting and Finance	Income Tax Law and Practice	[CC-6]	3.2 CG	Law	Income Tax Law and Practice	[CC-6]
3.3 CH	Accounting and Finance	Financial Accounting-II	[CC-7]	3.3		English Language	[LI-2]
3.4 CH		E-Commerce	[SEC-1]	3.4 CG		ComputerE-Commerce	[SEC-1]
3.5 CH		Indian Economy	[GEO]	Semester IV			
Semester IV				4.1	Accounting	Financial Accounting-II	[CC-1]
4.1 CH		Business Mathematics and Statistics		4.2 CG	Accounting	Cost Accounting-II	[CCS]
		[GE-4]		4.3 CG	Computer	Computer Applications in	
4.2 CH	Accounting and Finance	Fundamentals of Marketing				Business	[SEC-2]
		Management	[CC-8]	4.4 CG	Management	Entrepreneurship	[SEC-3]
4.3 CH	Accounting and Finance	Computer Applications in Business		Semester V			
			[CC-9]	5.1 CG	Accounting	Financial Accounting-III	[CC-9]
4.4 CH		Entrepreneurship	[SEC-2]	5.2 CG	Accounting	Auditing	[CC-10]
4.5 CH	Accounting and Finance	Fundamentals of Human Resource		Any one of the following			
		Management	[CC-10]	5.3.1CG	Accounting	Management Accounting	[DSF-1]
Semester V				5.3.2CG	Management	Fundamentals of Marketing Management	
5.1 CH	Accounting and Finance	Financial Accounting-III		Any one of the following			
5.2 CH	Accounting and Finance	Auditing	[CC-1 2]	5.4.1CG	Management	Indian Financial System	[DSE-2]
Any one of the following				5.4.2CG	Management	Fundamentals of Human Resource	
5.3.1 CH	Accounting and Finance	Management Accounting	[DSE-1]			Management	
5.3.2 CH		Fundamentals of Banking and Insurance		Semester VI			
Any one of the following				6.1 CG	Management	Personal Selling and Salesmanship	[SEC-4]
5.4.1 CH		Indian Financial System	IDSI--2	6.2 CG	Mathematics and Statistics	Business Mathematics and Statistics	[GF-2]
5.4.2 CH		Advertising		Any one of the following			
Semester VI				6.3.1CG	Management	Fundamentals of Investment	[DSF-3]
6.1 CH	Accounting and Finance	Fundamentals of Financial		6.3.2CG	Law	Indirect Tax Law	
		Management	[CC -13]	Any one of the following			
6.2 CH	Accounting and Finance	Indirect Tax Law	[CC-14]	6.4.1CG	Management	International Business	[DSE-4]
Any one of the following				6.4.2CG	Management	Fundamentals of Financial Management	
6.3.1 CH		Fundamentals of Investment	[DSE-3]				
6.3.2 CH		Business Tax Procedures and					
		Management	[DSE-3]				
Any one of the following							
6.4.1 CH		International Business	[DSE-4]				
6.4.2 CH		Project Work					

FEES & OTHER CHARGES (2021-22)

	B.A. (Gen.)	B.A. (Hons.)	B.com. (Gen.)	B.com. (Hons.)	B.Sc. (Gen.)	B.Sc. (Hons.)
1. Admission Fee (Per Sem.)	90.00	90.00	90.00	90.00	90.00	90.00
2. Tuition Fee (Per Month)	50.00	75.00	60.00	85.00	85.00	110.00
3. Development Fee (Per Month)	50.00	50.00	50.00	50.00	50.00	50.00
4. Building Fee (Per Sem.)	80.00	80.00	80.00	80.00	80.00	80.00
5. University Registration & Enrolment fees	As per University's Norm					
6. Library Caution Money (Refundable within 6 months from the date of passing out) (One time)	200.00	200.00	200.00	200.00	200.00	200.00
7. Cultural Fee (Per Sem.)	45.00	45.00	45.00	45.00	45.00	45.00
8. Library Card & Identity Card (at the time of admission)	50.00	50.00	50.00	50.00	50.00	50.00
9. College Examination (Per Sem.)	70.00	70.00	70.00	70.00	70.00	70.00
10. Library Fe (Per Sem.)	25.00	25.00	25.00	25.00	25.00	25.00
11. Electric Charges (Per Month)	20.00	20.00	20.00	20.00	20.00	20.00
12. Sports & Games (Per Sem.)	20.00	20.00	20.00	20.00	20.00	20.00
13. University Games & Sports Fees	As per University's Norm					
14. Magazine Fee (Per Sem.)	30.00	30.00	30.00	30.00	30.00	30.00
15. Common Room Fee (Per Sem.)	10.00	10.00	10.00	10.00	10.00	10.00
16. Student Aid Fun (Per Sem.)	10.00	10.00	10.00	10.00	10.00	10.00
17. Students Health Hom (Per Sem.)	05.00	05.00	05.00	05.00	05.00	05.00
18. Centre Fee (at the time of form fill-up)	As per University's Norm					
19. Transfer Certificate Fee	100.00	100.00	100.00	100.00	100.00	100.00
20. Computer Charges (Per Sem.)			80.00	80.00	for computer classes	
21. Functional Communicative English	For B.B.A. (H) & Com.Science (H) Rs.150/- per month					
22. B.B.A. (Hons.) (per semester)	14,000.00					
23. ICT Developments Fee (Per Sem.).	75.00					
24. C.B.C.S. Process Fee (Per Sem.)	50.00	100.00	50.00	100.00	50.00	100.00
Other Fees :						
1. Duplicate Identity Card - Rs. 40/-						
2. Duplicate Library Card- Rs. 40/-						
Sl. No. 7, 12, 14, 15 Collection will be made when student council is formed.						
3. Laboratory Fees :						
a) Geography Hons.- Rs. 600/- Per Semester						
b) Computer Science Honours Rs. 600/- Per Semester						
c) Chemistry Hons. Rs. 1000- Per Semester						
d) B.Sc. General- Rs. 350/- Per Semester						
e) Physical Education General- Rs. 200/- Per Semester						
f) Geography General- 200/- Per Semester						
4. Laboratory Caution Deposit (One time)						
a) Geography Hons.- Rs. 200/-						
b) Physical Education General- Rs. 80/-						
c) Geography General- Rs. 80/-						
d) Computer Science Hons.- Rs.200/-						
e) B.Sc. Gen.- Rs. 150/-						
f) Chemistry Hons.- Rs.200/-						
5. Faculty Dev. Fee Per Semester for Botany, Zoology, Education - Rs. 50/- w.e.f. July 2019						
Cash Counter Close : 2 pm						

The College Family

TEACHING FACULTY

Principal : **Dr Amal Kanta Hati**, M.Com, M.Phil, Ph.D

Bengali:

1. Harendranath Kole, M.A., M.Phil
2. Dr. Manik Mondal M.A. Ph. D.
3. Vacant
4. **Govt. Approved Part Time**
Dr. Nirmal Chattopadhyay, M.A., Ph.D.
Govt. Approved PTT
5. Soumen Mukherjee, M.A., M.Phil. " "
6. Indira Samaddar, M.A. " "
7. Netai Ch. Mondal, M.A. (Guest)
8. Paromita Bandyapadhyay, M.A. (Guest)

English:

1. Dr. Tapan Kumar Ghosh, M.A., Ph.D
2. Dr. Sutanuka Ghosh Roy, M.A., M.Phil, Ph.D
3. Vedatrayee Banerjee, M.A., M. Phil.
4. Gourav Chatterjee, M.A. (Guest)
5. Rimpal Pal, M.A. (Guest)
6. Sajoy Sutradhar M.A. (Guest)
7. Krishna Bera, M.A. (Guest)

History:

1. Dr. Arundhati Moulik (Ray), M.A., M.Phil, Ph.D.
2. Vacant
3. **Govt. Approved Part Time**
Samarpita Ghosh, M.A., M.Phil
Govt. Approved PTT
4. Umesh Biswas, M.A., (Guest)
5. Kaustab Bagchi, M.A., M.Phil. (Guest)
6. Sukanta Adhikari, M.A., B.Ed. (Guest)
7. Soumen Ghosh, M.A., B.Ed,
8. Tanmay Ghosh, M.A. B.Ed.

Economics:

1. Vacant

Philosophy:

1. Md. Shanawaz, M.A., M.Phil
2. Dr. Dibakar Manna, M.A., Ph.D.
3. **Govt. Approved Part Time**
Dr. Swathi Rakshit, M.A., Ph.D.
4. Moumita Chatterjee, M.A., M.Phil
5. Dr. Salim Babu, M.A. Ph.D.

Political Science:

1. Sri Suvro Sarkar, M.A.
Govt. Approved Part Time
2. Sd Sha Taukirul Islam, M.A., M.Phil.

Sociology :

1. Zargis Hossain, M.A.
2. Kamalika Mitra, M.A.
Govt. Approved Part Time
3. Chandan Maity, M.A.
4. Animesh Pan, M.A., M.Phil., M.A. (Envs)
5. Sourav Ghosh, M.A., M.Phil.

Physical Education :

1. Vacant
2. **Govt. Approved Part Time**
Palash Kr. Das, M.P.Ed.
3. Manik Ch. Samanta B.Com. B.A.. B.P.Ed. NIS
(S.A.I. Kolkata) Physical Instructor
4. Rita Santra, M.P.Ed. (Guest)

Geography :

1. Dr. Pintu Shee, M.A. Ph. D.
2. Dr. Chandramallika Biswas, M.A., M.Phil, Ph.D.
3. Sulata Hembrem, M.A.
Govt. Approved Part Time
4. Rishika Paul, M.A
5. Suchitra Sasmal, M.A. B.Ed. (Guest)
6. Ramkrishna Dey, M.Sc. M.Ed. (Guest)

Sanskrit :

1. Animesh Haldar, M.A., M.Phil.
Govt. Approved Part Time
2. Dr. Dola Pal, M.A., M.Phil. Ph.D.
3. Abhinandan Roy, M.A., M.Phil.
4. Nabin Laga, (M.A. (Guest)
5. Sandip Jana, M.A. M. Phil
6. Chiranjit Ghosh, M.A. Ph.D.

Music :

1. Dr. Srabani Sen, M.A., Ph.D
Govt. Approved Part Time
2. Nita Bandyopadhyay, M.A.
3. Jaya Shree Mondal, M.A. (Guest)
4. Shyamal Dutta, (Tabla Accompanist)

Education:

1. Tuhin Pal, M.A. B.Ed. (Guest)
2. Avishek Kar, M.A. B.Ed.

Commerce :

1. Dr. Rama Nag, M.Com, Ph.D.
2. Dr. Ratanlal Bhowmic, M.Com, Ph.D, FCMA.
3. Abhik Singharoy, M.A., M.Phil (Govt. Approved PTT)
4. Arnab Basu, M.Com, PGDFA (Guest)
5. Dr. Basudeb Choudhury, M.Com. Ph. D. (Guest)
6. Sumanta Patra, M.Com. (Guest)
7. Sk. Nasiruddin, M.Com. (Guest)

Tarakeswar Degree College

Business Administration :

Contractual whole timer

1. Dr. Jyotirmoy Mazumder, *M.B.A. Ph. D.*
2. Jagannath Koley, *M.B.A.*
3. Debjyoti Rakshit, *M. Com, M.B.A.*

Mathematics:

1. Vacant
2. Tapasi Dey, *M.Sc. (Guest)*
3. Soumyadip Mondal, *M.Sc. (Guest)*
4. Pratima Bhar, *M.Sc. (Guest)*

Computer Science :

One full time post vacant

1. Ananda Khamaru, *M.Sc.(Contractual Wholotimer)*
2. Sudip Kumar Banerjee, *M.C.A. (Guest)*
3. Pritam Das, *M.Sc. (Guest)*
4. Anis Chakraborty, *M.C.A. (Guest)*
5. Sk. Md Abidar Rahaman, *M. Tech. (Guest)*

Physics :

1. Sk. Yasnur, *M.Sc.*
2. Summa Sultana, *M.Sc. (Guest)*

Chemistry :

1. Dr. Debasree Mandal, *M.Sc., Ph.D.*
2. Suprakash Dhara *M.Sc. (Guest)*
3. Animesh Bag, *M.Sc. (Guest)*
4. Labani Sarkar, *M.Sc. (Guest)*
- 5. Tanmoy Pandit, *M.Sc. (Guest)*

Botany :

1. Madhurima Khamaru, *M.Sc. (Guest)*

Zoology :

1. Debangshu Banerjee *M.Sc.B. Ed. (Guest)*
2. Madhurima Seal, *M.Sc., (Guest)*
3. Sohini Chatterjee, *M.Sc., B.Ed. (Guest)*

Library :

1. Librarian-Smt. Aparna Panday, *M.L.I.S. M.A.*

Environment Science :

1. Bidyuddipto Chakraborty, *M.Sc., M.L.I.S.*
(Guest)

Name	Designation	Working Since the year
Sri Tarak Nath Chattopadhyay, <i>B.Sc., LLB</i>	Head Clerk	1988
Sri Golok Ch. Mete, <i>B.Com</i>	Accountant Clerk	1988
Sri Sukumar Puley, <i>B.Com.</i>	Cashier	1988
Smt. Reba Bhattacharyya, <i>M.A., BLIS</i>	Library Clerk	1988
Sri Sasanka Sekhar Bera, <i>B.A.</i>	Office Bearer	1988
Sri Swapan Kumar Shaw, <i>B.A.(Hons.)</i>	Guard	1998
Sri Shyam Rout,	Sweeper/Jamader	1998
Sri Saumya Mallik, <i>B.Com (Hons.)</i>	Clerk	2006
Smt. Sikha Ghorui, <i>M.A.</i>	Lady attendant	2006
Sri Asim Pal, <i>B.Com.</i>	Generator/Pump/Gas-Plant	2006
	Operator Cum Mechanic	
Sri Haradhan Kundu, <i>IET, WBESCC, WBEWP</i>	Electrician cum Caretaker	2006
Sri Khokan Haldar, <i>H.S.</i>	Gr. 'D' Peon	2007
Sri Tarak Majhi	Sweeper (Part-time)	2007
Sri Sanjib Bera, <i>M.A.</i>	Laboratory Attendant (Computer Science)	2012
Robaida Khatun, <i>M.A.</i>	Laboratory Attendant (Geography)	2012
Sri Mithun Bhumij, <i>B.A. (Hons.)</i>	Laboratory Attendant (Geography)	2012
Sri Ashis Samanta, <i>H.S.</i>	Laboratory Attendant (Phy.Education)	2012
Sri Kausik Maji, <i>H.S.</i>	Laboratory Attendant (Phy.Education)	2012
Smt. Chandi Pakhira (Roy), <i>M.P.</i>	Sweeper (Part-time)	2012
Sri Nepal Ch. Adhikari	Temporary Gardener	2005
Sri Manas Guchait, <i>D.E.E.</i>	Temporary Employee	2006
Md. Fayeem Ahammad, <i>B.A. (Hons.)</i>	Temporary Employee	2012

Administrative Sub Committee

1. Finance Committee

- i) Principal, Chairman & Convener
- ii) Dr. Sujit Roy, University Nominee
- iii) Swapan Kr. Samanta, Chairman
(Tarakeswar Municipality)
- iv) Kajal Kr. Kunti, Govt. Nominee.
- v) Dr. Ratanlal Bhowmik, T.R.
- vi) Sasanka Sekhar Bera, N.T.R.

2. Building Committee

- i) Principal (*Convener*)
- ii) Swapan Kr. Samanta, Chairman
Tarakeswar Municipality.
- iii) Kajal Kr. Kunti
- iv) Dr. Tapan Kr. Ghosh.
- v) Dr. Ratanlal Bhowmik (Bursar)
- vi) Dr. Kakoli Sharma
- vii) Ashis Samanta
- viii) TR Member
- ix) Engineer Hooghly Zila Parisad
- x) Engineer of PWD/ Zilla Parishad (Hooghly)
- xi) Engineer, Tarakeswar Municipality

3. Teachers' Council

- i) Dr. Amal Kanta Hati
- ii) Sk. Yasnur, **Secretary**
- iii) Dr. Dibakar Manna, **Astt. Secreatry**
- iv) Harendranath Kole
- v) Dr. Tapan Kumar Ghosh
- vi) Md. Shanawaz
- vii) Dr. Arundhati Moulik (Ray)

- viii) Dr. Rama Nag (De)
- ix) Suvro Sarkar
- x) Dr. Ratanlal Bhowmik
- xi) Dr. Sutanuka Ghosh Roy
- xii) Dr. Pintu Shee
- xiii) Dr. Srabani Sen
- xiv) Aparna Panday
- xv) Dr. Debashree Mandal
- xvi) Zargis Hossain
- xvii) Kamalika Mitra
- xviii) Animesh Halder
- xix) Vedatrayee Banerjee
- xx) Dr. Manik Mondal
- xxi) Dr. Chanramallika Biswas
- xxii) Sulata Hembram.

4. Purchase Committee

- i) Principal (*Convenor*)
- ii) Aparna Panday
- iii) Dr. Ratanlal Bhowmik
- iv) Sasankasekhar Bera
- v) Ashis Samanta.

বর্ধমান বিশ্ববিদ্যালয় কর্তৃক প্রেরিত নির্দেশ (Letter No. UG/Sem/All Principals | Dt. 05.05.2017)
বি.এ./বি.এস.সি./বি.কম কোর্সের সেমিস্টারভিত্তিক রূপরেখা
(CBCS-এর আয়ত্ত্বাধীন)

CBCS-এর আয়ত্ত্বাধীন প্রধানত দুটি কোর্সের গঠনপ্রণালী নিচে বর্ণিত হল :

- (ক) সাম্মানিক কোর্স
(খ) সাধারণ কোর্স

এই কোর্সগুলির গঠন নিম্নরূপ :

১। **Core Course (CC)** (মূল কোর্স) -এই কোর্সগুলি আবশ্যিকভাবে প্রতিটি শিক্ষার্থীকে পড়তে হবে।

২। **Elective Course (EC)** (ঐচ্ছিক কোর্স) -এই কোর্সটি হল এমন একটি কোর্স যেটি শিক্ষার্থীরা কতকগুলি কোর্স থেকে নির্বাচিত করবে। এই কোর্সগুলি উন্নতমানের বিশেষ জ্ঞান ও দক্ষতা লাভ করার সুযোগ করে দেবে।

২.১) **Discipline Specific Elective Course (DSE)** -এই কোর্সগুলির মাধ্যমে শিক্ষার্থীরা প্রধান (Discipline/Subject) নির্বাচিত বিষয় সম্পর্কিত অন্যান্য কোর্সে পড়ার সুযোগ পাবে।

২.২) **Generic Elective (GE)** (জেনেরিক/সাধারণ ঐচ্ছিক কোর্স) -এটি এমন একটি কোর্স যা দ্বারা শিক্ষার্থীরা কোন নির্বাচিত বিষয়টি/বিষয়গুলির অসংশ্লিষ্ট বিষয় থেকে তাদের কোর্স নির্বাচন করতে পারবে যার দ্বারা তাদের পটুতা বা কুশলতা বৃদ্ধি পাবে।

বিঃদ্রঃ- যে কোন Discipline-এর মূল কোর্সকে অন্য কোন Discipline -এর ঐচ্ছিক (Elective) কোর্স হিসাবে নির্বাচন করা যেতে পারে। সে ক্ষেত্রে সেই নির্বাচিত ঐচ্ছিক কোর্সটি Generic Elective হিসাবে গণ্য হবে।

২.৩) **তত্ত্বালোচনা/প্রকল্প** : একটি নির্বাচিত কোর্স যেটির দ্বারা শিক্ষার্থী বিশেষ উৎকৃষ্ট জ্ঞানার্জন করতে পারবে। এই কোর্সটির দ্বারা শিক্ষার্থী বাস্তবিক দৈনন্দিক জীবন সংক্রান্ত বা গবেষণাধর্মী তাত্ত্বিক সমস্যার সমাধান করতে পারবে। এই তত্ত্বালোচনা বা প্রকল্পে ৬টি Credit থাকবে এবং এটি কোন DSE -র পরিবর্তে বিষয়রূপে কাজ করবে।

৩। **সামর্থ্য/দক্ষতাবর্ধক কোর্স (AEC)** -এটি প্রধানত দু'রকমের- (১) সামর্থ্যবর্ধক আবশ্যিক কোর্স, (২) পটুত্ববর্ধক কোর্স।

৩.১) **AEC** -এই কোর্সগুলি মূল বিষয়ের উপর স্থাপিত এবং জ্ঞান বর্ধিতকরণের পথ প্রদর্শক। এই কোর্সের অন্তর্গত বিষয়গুলি হল : পরিবেশবিদ্যা এবং যোগাযোগমূলক ইংরেজি/আধুনিক ভারতীয় ভাষা। এগুলি প্রতিটি শিক্ষার্থীর জন্য আবশ্যিক।

৩.২) **SEC-SEC** হল মূল্যবোধভিত্তিক অথবা দক্ষতা/পটুত্বভিত্তিক শিক্ষা, যার লক্ষ্য হল হাতেকলমে শিক্ষাদান, দক্ষতাবৃদ্ধি ইত্যাদি, সাম্মানিক কোর্সের ক্ষেত্রে ন্যূনতম ২টি কোর্স পড়তে হবে এবং সাধারণ কোর্সের ক্ষেত্রে ৪টি কোর্স পড়তে হবে। এই কোর্সের প্রধান উদ্দেশ্য শিক্ষার্থীদের জীবনমুখী শিক্ষায় শিক্ষিত করা যাতে করে সেটি তারা তাদের জীবিকা অর্জনের কাজে ব্যবহার করতে পারে।

Practical/ Tutotial প্রতিটি Core, Discipline Specific এবং Generic Elective বিষয়ের সাথে একটি করে Practical/Tutorial থাকবে।

Course-এর গঠনরূপ (সাম্মানিক ও সাধারণ)

Course- এর উপাদান	বি.এস.সি.		বি.এ.		বি.কম.	
	সাম্মানিক	সাধারণ	সাম্মানিক	সাধারণ	সাম্মানিক	সাধারণ
Core Course (CC) মূল কোর্স	14	12	14	12	14	12
Discipline Specific Elective (DSE) Course বিষয়ভিত্তিক ঐচ্ছিক কোর্স	4	6	4	4	4	4
Generic Elective (GE) Course জেনেরিক /সাধারণ ঐচ্ছিক কোর্স	4		4	2	4	2
Ability Enhancement Compulsory Coures (AEC) দক্ষতা বর্ধক কোর্স	2	2	2	2	2	2
Skill Enhancement Course (SEC) পটুত্ববর্ধক কোর্স	2	4	2	4	2	4

- ❖ সাম্মানিক কোর্সের একটি ছাত্র তখনই স্নাতক হিসাবে গণ্য হবে যখন সে তার নির্বাচিত বিষয়ের ১৪টি মূল কোর্স, ৪টি করে বিষয়ভিত্তিক ঐচ্ছিক কোর্স এবং জেনেরিক ঐচ্ছিক কোর্স ও দুটি সামর্থ্যবর্ধক আবশ্যিক কোর্স ও দুটি দক্ষতাবর্ধক কোর্সগুলি থেকে উত্তীর্ণ হবে।
- ❖ বি.এস.সি সাধারণ কোর্সের একটি ছাত্র তখনই স্নাতক হিসাবে গণ্য হবে যখন সে তার নির্বাচিত তিনটি Discipline-এর চারটি করে মূল কোর্স, দুটি করে বিষয়ভিত্তিক ঐচ্ছিক কোর্স এবং দুটি দক্ষতা বর্ধক আবশ্যিক কোর্স ও চারটি পটুত্ববর্ধক কোর্সগুলি থেকে উত্তীর্ণ হবে।
- ❖ বি.এ. এবং বি.কম. সাধারণ কোর্সের একটি ছাত্র তখনই স্নাতক হিসাবে গণ্য হবে যখন সে তার নির্বাচিত দুটি Discipline এর চারটি করে মূল কোর্স, দুটি বিষয়ভিত্তিক ঐচ্ছিক কোর্স, বাংলা বা হিন্দী থেকে নির্বাচিত যে কোনো দুটি ভাষার দুটি মূল কোর্স, দুটি ঐচ্ছিক কোর্স, দুটি দক্ষতা বর্ধক আবশ্যিক কোর্স ও চারটি পটুত্ব বর্ধক কোর্সগুলি থেকে উত্তীর্ণ হবে। সে ক্ষেত্রে প্র্যাকটিক্যাল বিষয় আছে বিপরীতক্রমে সেখানে টিউটোরিয়াল ক্লাস নেই।
- ❖ শিক্ষার্থীদের মূল্যায়ন হবে ধারাবাহিক প্রক্রিয়ার মাধ্যমে। মূল্যায়ণ প্রক্রিয়ার রূপরেখা নিচে দেওয়া হল-
 প্রত্যেক সেমিস্টারের মূল্যায়নকে তিনভাবে ভাগ করা হবে- যথা- C1, C2, C3 ধারাবাহিক মূল্যায়নের প্রক্রিয়া সম্বন্ধে শিক্ষার্থীদের অবগত করানো হবে। C1 এ থাকবে প্রত্যেক কোর্সের মোট নম্বরের ১০ শতাংশ। যা নির্ভর করবে ক্লাসে উপস্থিতি শ্রেণিকক্ষ মূল্যায়ন Assignment/Seminar ইত্যাদির উপর।
 প্রত্যেক সেমিস্টারের প্রথম দুইমাসে সিলেবাসের এক-তৃতীয়াংশ শেষ হবে। সংশ্লিষ্ট সেমিস্টারের অষ্টম সপ্তাহে ধারাবাহিক মূল্যায়ন পদ্ধতি লব্ধ নম্বর একত্রিত করা হবে।
 C2 এ থাকবে প্রত্যেক কোর্সের মোট নম্বরের ১০ শতাংশ। যা নির্ভর করবে ক্লাসে উপস্থিতি শ্রেণিকক্ষ মূল্যায়ন Assignment/Seminar ইত্যাদির উপর। প্রত্যেক সেমিস্টারে দ্বিতীয় দুই মাস দুই-তৃতীয়াংশ সিলেবাস শেষ হবে। সংশ্লিষ্ট সেমিস্টারের ষোড়শ সপ্তাহে ধারাবাহিক মূল্যায়ণ পদ্ধতি লব্ধ C2 তে নম্বর একত্রিত করা হবে। C1 ও C2 তে উপস্থিতি বাধ্যতামূলক।
 সেমিস্টারের ২১ তম থেকে ২৩ তম সপ্তাহে প্রত্যেক ডিসপ্লিনের এবং কোর্সের সেমিস্টারের আন্তঃ পরীক্ষা হবে এবং সেখানে থাকবে প্রত্যেক কোর্সের মোট নম্বরের ৮০ শতাংশ নম্বর। এটিকে C3 বলা হবে।
 প্রত্যেক ফলাফল নির্ভর করবে C1, C2 ও C3 এর নম্বরের উপর। সেখানে গ্রেড পয়েন্ট দেওয়া হবে।

Generic Elective (GE) Course :

B.A./B.Sc (Hons)

যে কোনো ছাত্র-ছাত্রীকে Sem-I থেকে Sem-IV এর মধ্যে ৪টি GE Paper পড়তে হবে দুটি বিষয় থেকে। Sem-I ও Sem-II এ কোনো বিষয় এর দুটি পত্র পড়লে Sem-III ও Sem-IV এ অন্য বিষয় থেকে দুটি পত্র পড়তে হবে।

B.A. (General)

B.A. (General) এর কোনো ছাত্র-ছাত্রীকে কোন বিষয় থেকে মোট দুটি GE Paper যথাক্রমে 5th ও 6th Sem. এ পড়তে হবে। তবে GE Subject টি অবশ্যই Core Subject (CCA, CCB) Core Language (L₁ ও L₂) ছাড়া অন্য কোনো বিষয় হতে হবে।

B.Com (Hons) এর কোনো ছাত্র-ছাত্রী তাদের সিলেবাস উল্লেখিত বিষয় পড়বে যথাক্রমে Sem-I, Sem-II, Sem-III ও Sem-IV এ।
SEC :

B.A./B.Sc. (Hons) কোনো একটি ছাত্র-ছাত্রীকে অনার্স বিষয়ের দুটি SEC Course পড়তে হবে। SEC-1, 3rd Semester ও SEC-2, 4th Semester এ পড়তে হবে।

B.Com (Hons) SEC-1 ও SEC-2 যথাক্রমে 3rd Semester ও 4th Semester এ পড়তে হবে।

B.A./B.Sc (General)

কোনো B.A./B.Sc (General) এর ছাত্র-ছাত্রী ৪টি SEC Course তার দুটি Core Course Subject থেকে পছন্দ করতে পারবে। CCA Core Course Subject থেকে Sec-I ও Sec-II যথাক্রমে 3rd ও 4th Semester এ পড়লে CCB Core Course Subject থেকে Sec-III ও Sec-IV যথাক্রমে এ পড়তে হবে।

B.Com (Hons) এর কোনো ছাত্র-ছাত্রী তাদের সিলেবাস উল্লেখিত বিষয় পড়বে যথাক্রমে Sem-I, Sem-II, Sem-III ও Sem-IV এ।
SEC :

B.Com (General) : B.Com (General) এর কোনো ছাত্র-ছাত্রীকে ৪টি Sec Course যথাক্রমে 3rd, 4th, 5th ও 6th Semester এ পড়তে হবে।

DSE :

B.A. (Hons)

Honours Course এর কোন ছাত্র-ছাত্রীকে তার বিষয়ে উল্লেখিত Syllabus থেকে DSE-1 ও DSE-2 পড়তে হবে 5th Semester এ এবং DSE-3 ও DSE-4 পড়তে হবে 6th Semester এ।

B.A. (General)

General Course এর কোন ছাত্র-ছাত্রীকে তার দুটি Core Subject (CCA, CCB) এ উল্লেখিত Syllabus থেকে 5th Semester এ DSE-1A ও DSE-2A দুটি Paper পড়তে হবে এবং 6th Semester এ DSE-1B ও DSE-2B।

উদাহরণ : Core Subject CCA-Geography ও CCB-Sociology হলে 5th semester এ DSE-1A-Geography Syllabus থেকে ও DSE-2A Sociology Syllabus থেকে পড়বে। আবার 6th Semester এ DSE-1B-Geography বিষয় থেকে এবং DSE-2B Sociology বিষয় থেকে পড়বে।

B.Com (Hons.)

B. Com (Hons.) এর নির্দিষ্টভাবে উল্লেখিত DSE-1 ও DSE-2 5th Semester এ এবং DSE-3 ও DSE-4 6th Sem. এ পড়তে হবে।

B.Com (General)

B. Com (General) এর Syllabus এ নির্দিষ্টভাবে উল্লেখিত Commerce এর অন্তর্ভুক্ত Course DSE-1 ও DSE-2 5th Semester এ এবং DSE-3 ও DSE-4 6th Semester এ পড়তে হবে।

B. Sc (Honours)

5th Semester এ Syllabus উল্লেখিত DSE-1 ও DSE-2 পড়তে হবে। আবার 5th Semester এও Syllabus এ অন্তর্ভুক্ত DSE-3 ও DSE-4 পড়তে হবে।

B. Sc (General)

B.Sc General এর কোন ছাত্র-ছাত্রীকে 5th ও 6th Semester এ তিনটি করে DSE Course পড়তে হবে। যদি কোন ছাত্র-ছাত্রীর Core Subject গুলি CCA-Botany CCB-Zoology, CC-C Chemistry হয় তাহলে DSE-1A Botany Subject, DSE-2A Zoology Subject ও DSE-3A Chemistry Subject থেকে পড়তে হবে। একইভাবে 6th Semester এ DSE-1B, DSE-2B ও DSE-3B উক্ত বিষয়গুলি থেকে পড়তে হবে।

Duration of Examination (Forth Both Honours and General Course)

<u>Subject</u>	<u>Marks</u>	<u>Duration</u>
Theoretical Paper	60	3 Hours.
Theoretical Paper	40	2 Hours.
AECC-1 (ENVS) (NCQ)	80	2 Hours.
AECC-2 (Comm., Eng/Mil) (NCQ)	50	3 Hours 30 Min.
Practical Paper	Upto 20	4 Hours. Maximum
Practical	Above 20	5 Hours. Maximum

Rules for Graduation :

১) কোনো (Regular/Back) পরিক্ষার্থীকে Sem-I, II, III, IV, V ও VI এ (Hons./General Course) Enrolled হওয়ার ৭ বৎসরের মধ্যে সমস্ত Semester পাশ করতে হবে।

২) কোন একটি Semester পাশ করার জন্য একজন পরিক্ষার্থী মোট তিনবার সুযোগ পাবে।

৩) কোন পরিক্ষার্থী Final Semester End Examination (Semester-VI) এ বসার আগে তাকে Semester-I থেকে Semester-V পর্যন্ত সমস্ত .Semester Clear করতে হবে।